

Overseas Network

◆ Branch Office ■ Subsidiary or Affiliate ○ Branch Office of a Subsidiary or an Affiliate ▲ Representative Office △ Underwriting Agency ● Alliance Company

Sompo Japan

EUROPE

U.K.

London

◆ UK Branch

■ Sompo Japan Nipponkoa Insurance Company of Europe Limited (Headquarters)

■ Sompo Japan Claim Services (Europe) Limited.

■ Sompo Japan Corporate Member Limited

1st Floor, 6 Devonshire Square, London EC2M 4YE, U.K.

GUERNSEY

Saint Peter Port

■ Ark Re Limited

Maison Trinity, Trinity Square, St. Peter Port, Guernsey, Channel Islands GY1 4AT

GERMANY

Düsseldorf

○ Sompo Japan Nipponkoa Insurance Company of Europe Limited (Germany Branch)

Seestern Tower, Niederkasseler Lohweg 175-179, 40549 Dusseldorf, GERMANY

BELGIUM

Brussels

○ Sompo Japan Nipponkoa Insurance Company of Europe Limited (Belgium Branch)

Avenue Louise 283, Bte 10, 1050 Brussels, BELGIUM

NETHERLANDS

Amsterdam

○ Sompo Japan Nipponkoa Insurance Company of Europe Limited (The Netherlands Branch)

Eurocenter II, Barbara Strozzi laan 370, 1083 HN Amsterdam, THE NETHERLANDS

FRANCE

Paris

○ Sompo Japan Nipponkoa Insurance Company of Europe Limited (France Branch)

6, Square de l'Opéra Louis Jouvet, 75009 Paris, FRANCE

ITALY

Milan

○ Sompo Japan Nipponkoa Insurance Company of Europe Limited (Italy Branch)

Via Larga 13-20122, Milano, ITALY

SPAIN

Barcelona

○ Sompo Japan Nipponkoa Insurance Company of Europe Limited (Spain Branch)

Calle de la Marina, 16-18, Planta 8A, Torre Mapfre, Villa-Olimpica, 08005, Barcelona, SPAIN

RUSSIA

Moscow

● OJSC IC Allianz, NKSJ Division

▲ Moscow Representative Office
NKSJ Division, Allianz Building, 30, Ozerkovskaya Nab., Moscow, 115184, RUSSIA

MIDDLE EAST

U.A.E.

Dubai

▲ Dubai Representative Office

NGI House, Office 1100A, 11th Floor, Port Saeed, Deira, Dubai, P.O. Box 25538, UNITED ARAB EMIRATES

TURKEY

Istanbul

■ Sompo Japan Sigorta Anonim Sirketi

* branches in 7 other cities
Cumhuriyet Cad.
No:10 Acarlar iş merkezi C blok 34805, Kavacık-Beykoz / Istanbul, TURKEY

NORTH AMERICA

U.S.A.

New York

■ Sompo Japan Insurance Company of America (Headquarters)

■ Sompo Japan Fire & Marine Insurance Company of America
777 Third Avenue, 28th Floor, New York, NY 10017-1414, U.S.A.

Los Angeles

○ Sompo Japan Insurance Company of America (Los Angeles Branch)

○ SJA Insurance Agency, LLC (Los Angeles Branch)

633 West Fifth Street, Suite 800, Los Angeles, CA 90071, U.S.A.

Chicago

○ Sompo Japan Insurance Company of America (Chicago Branch)

25 Northwest Point Blvd., Suite 745, Elk Grove Village, IL 60007, U.S.A.

Nashville

○ Sompo Japan Insurance Company of America (Nashville Branch)

Cool Springs I, Suite 460, 720 Cool Springs Blvd., Franklin, TN 37067, U.S.A.

Charlotte

■ SJA Insurance Agency, LLC (Headquarters)

11405 North Community House Road, Suite 500, Charlotte, NC 28277, U.S.A.

Newark

■ Sompo Japan Nipponkoa Holdings (Americas) Inc.

113 Barksdale Professional Center, Newark, DE 19711, U.S.A.

CANADA

Toronto

◆ Canada Branch

25 York Street, Suite 602, Toronto,
Ontario, M5J 2V5, CANADA

△ Ace INA Insurance

25 York Street, Suite 1400,
Toronto, Ontario, M5J 2V5, CANADA

CENTRAL AND SOUTH AMERICA

BERMUDA

Hamilton

■ Eterna Insurance Company Limited

Clarendon House 2 Church Street,
Hamilton HM11, BERMUDA

BRAZIL

Sao Paulo

■ Yasuda Seguros, S.A. (Headquarters)

* branches in 12 other cities
Rua Cubatão, 320
Paraíso São Paulo-SP
CEP04013-001-BRAZIL

■ Sompso Japan do Brasil Ltda.

Rua Cubatão, 320-15° and.
Paraíso São Paulo-SP
CEP04013-001-BRAZIL

■ Vistomar Sevcos de Vistoria Ltda.

Rua Cubatão, 320-12° and.
Paraíso São Paulo-SP
CEP04013-001-BRAZIL

■ Marítima Seguros S.A. (Headquarters)

* branches in 45 other cities
Rua Coronel Xavier de Toledo,
No.114, 9° and.
São Paulo-SP CEP01048-902-BRAZIL

■ Marítima Saude Seguros S.A.

Rua Coronel Xavier de Toledo,
No.114, 10° and.
São Paulo-SP CEP01048-902-BRAZIL

MEXICO

Mexico City

■ Sompso Japan Insurance De Mexico, S.A. de C.V.

Av. Insurgentes Sur No. 1196 Piso 12
Desp. 1201 Col. Tlacoquemecatl del Valle,
C.P. 03200 Mexico, D.F. MEXICO

ASIA

CHINA

Dalian

■ Sompso Japan Insurance (China) Co., Ltd. (Headquarters)

10th Floor, Dalian Senmao Building,
147 Zhong Shan Road, Xi Gang District,
Dalian, Liaoning Province 116011,
THE PEOPLE'S REPUBLIC OF CHINA

■ Sompso Japan System Solutions (Dalian) Co.,Ltd.

Room B501, Building 18,
Software Park, No.1
Xueyuan Square, Dalian,
Liaoning Province,
THE PEOPLE'S REPUBLIC OF CHINA

Shanghai

○ Sompso Japan Insurance (China) Co., Ltd. (Shanghai Branch)

20th Floor, Hang Seng Bank Tower,
1000 Lu Jia Zui Ring Road,
Pudong New Area, Shanghai 200120,
THE PEOPLE'S REPUBLIC OF CHINA

Guangzhou

○ Sompso Japan Insurance (China) Co., Ltd. (Guangdong Branch)

Room 4016, Tower B,
China Shine Plaza, 9 Lin He West Road,
Tian He District, Guangzhou,
Guangdong Province 510610,
THE PEOPLE'S REPUBLIC OF CHINA

Suzhou

○ Sompso Japan Insurance (China) Co., Ltd. (Jiangsu Branch)

Room 1602, 16th Floor, Genway Plaza,
188 Wang Dun Road,
Suzhou Industrial Park,
Suzhou, Jiangsu Province 215123,
THE PEOPLE'S REPUBLIC OF CHINA

Beijing

○ Sompso Japan Insurance (China) Co., Ltd. (Beijing Branch)

Room 406-407, 4th Floor, East Tower,
World Financial Center,
No.1 Dong San Huan Middle Road,
Chaoyang District, Beijing 100020,
THE PEOPLE'S REPUBLIC OF CHINA

Chongqing

▲ Chongqing Representative Office

Room 1708 A, Metropolitan Tower,
68 Zou Rong Road, Chongqing 400010,
THE PEOPLE'S REPUBLIC OF CHINA

Hong Kong

■ △ Sompso Japan Nipponkoa Insurance (Hong Kong) Company Limited

◆ Hong Kong Branch

Room 1901, Lincoln House,
Taikoo Place, 979 King's Road,
Island East, Hong Kong S.A.R.,
THE PEOPLE'S REPUBLIC OF CHINA

■ Sompso Japan Nipponkoa Reinsurance Company Limited

22/F, Bank of East Asia Harbour
View Centre, 56 Gloucester Road,
Wanchai, Hong Kong S.A.R.,
THE PEOPLE'S REPUBLIC OF CHINA

TAIWAN

Taipei

■ Sompso Japan Nipponkoa Insurance (Taiwan) Brokers Co., Ltd.

▲ Taipei Representative Office

Room C, 10th Floor, Shen Hsiang Tang
Sung Chiang Building, No. 146,
Sung Chiang Road, Taipei, TAIWAN

KOREA

Seoul

■ Sompso Japan Nipponkoa Consulting (Korea) Inc.

7th Floor, Seoul Finance Center,
84 Taepyeongno 1-ga, Jung-gu,
Seoul, 100-768 KOREA

SINGAPORE

Singapore

■ **Sompo Japan Asia Holdings Pte. Ltd.**

50 Raffles Place,
#03-03 Singapore Land Tower,
048623, REPUBLIC OF SINGAPORE

■ **Tenet Sompo Insurance Pte. Ltd.**

50 Raffles Place,
#05-01/06 Singapore Land Tower,
048623, REPUBLIC OF SINGAPORE

MALAYSIA

Kuala Lumpur

■ **Berjaya Sompo Insurance Berhad (Headquarters)**

* branches in 21 other cities
18th Floor, Menara BGI, Plaza Berjaya,
12 Jalan Imbi, 55100, Kuala Lumpur,
MALAYSIA

Labuan

◆ **Labuan Branch**

c/o Etiqa Offshore Insurance (L) Ltd,
Level 11B, Block 4 Office Tower,
Financial Park Labuan,
Jalan Merdeka 87000,
Labuan F.T. MALAYSIA

INDONESIA

Jakarta

■ **PT. Asuransi Sompo Japan Nipponkoa Indonesia**

* branches in 5 other cities
Mayapada Tower II, 19th Floor,
Jl. Jendral Sudirman Kav.27,
Jakarta 12920, INDONESIA

PHILIPPINES

Manila

■ **PGA Sompo Japan Insurance Inc.**

▲ **Manila Representative Office**
5th Floor, Corinthian Plaza,
121 Paseo de Roxas Legaspi Village,
Makati, Metro Manila, PHILIPPINES

THAILAND

Bangkok

■ **Sompo Japan Nipponkoa Insurance (Thailand) Public Company Limited**■ **Sompo Japan Nipponkoa Brokers (Thailand) Co., Ltd.**

12th Floor, Abdulrahim Place,
990 Rama 4 Road, Silom, Bangrak,
Bangkok 10500, THAILAND

Sriracha

○ **Sompo Japan Nipponkoa Insurance (Thailand) Public Company Limited**

98/16 Sukhumvit Road, Sriracha,
Cholburi 20110, THAILAND

VIETNAM

Hanoi

■ **United Insurance Company of Vietnam**▲ **Hanoi Representative Office**

11th Floor, Hanoi Tung Shing Square,
Unit 1102, 2 Ngo Quyen Street,
Hoan Kiem District, Hanoi, VIETNAM

Ho Chi Minh City

■ **United Insurance Company of Vietnam**▲ **Ho Chi Minh Representative Office**

16th Floor, Vincom Center,
72 Le Thanh Ton Street, District 1,
Ho Chi Minh City, VIETNAM

MYANMAR

Yangon

▲ **Yangon Representative Office**

Room No. 1205, 12th Floor,
Sakura Tower, No. 339,
Bogyoke Aung San Street,
Kyauktada Township, Yangon,
MYANMAR

INDIA

Mumbai

■ **Universal Sompo General Insurance Company Limited (Headquarters)**

* branches in 56 cities, other than
Mumbai, Chennai, Kolkata and Delhi
Unit No. 401, 4th Floor, Sangam Complex,
127, Andheri Kurla Road, Andheri (East),
Mumbai 400059, INDIA

▲ **Mumbai Representative Office**

Unit No. 402, 4th Floor, Sangam Complex,
127, Andheri Kurla Road, Andheri (East),
Mumbai 400059, INDIA

Chennai

○ **Universal Sompo General Insurance Company Limited (Chennai Office)**

Capitale Towers, 5th Floor,
554 & 555, Anna Salai, Teynampet,
Chennai - 600018, INDIA

Kolkata

○ **Universal Sompo General Insurance Company Limited (Kolkata Office)**

7th Floor, Express Towers,
42A, Shakespeare Sarani,
Kolkata - 700017, INDIA

Delhi

○ **Universal Sompo General Insurance Company Limited (Delhi Office)**

SCO 39 & 40, 1st Floor,
Sector 31, Gurgaon-122002,
Haryana, INDIA

OCEANIA

AUSTRALIA

Sydney

◆ **Australia Branch**

Allianz Australia Insurance Limited

Allianz Centre,
Forecourt Building Level 12,
2 Market Street, Sydney, N.S.W. 2000,
AUSTRALIA

Nipponkoa

EUROPE

U.K.

London

- **NIPPONKOA Insurance Company (Europe) Limited (Headquarters)**
- **NIPPONKOA Management Services (Europe) Limited**
- **Nippon Insurance Company of Europe Limited (Headquarters)**
- ▲ **London Representative Office**
1st Floor, 6 Devonshire Square,
London, EC2M 4YE, U.K.

GUERNSEY

Saint Peter Port

- **Nippon Insurance Company of Europe Limited (Guernsey Branch)**
P.O. Box 34 Albert House,
South Esplanade,
St. Peter Port Guernsey,
Channel Islands GY1 4AU

GERMANY

Düsseldorf

- **NIPPONKOA Insurance Company (Europe) Limited (Germany Branch)**
- ▲ **Düsseldorf Representative Office**
Seestern Tower,
Niederkaßeler Lohweg 175-179,
40549 Dusseldorf, GERMANY

BELGIUM

Brussels

- **NIPPONKOA Insurance Company (Europe) Limited (Belgium Branch)**
- ▲ **Brussels Representative Office**
Avenue Louise 283,
Bte 10, 1050 Brussels, BELGIUM

NETHERLANDS

Amsterdam

- **NIPPONKOA Insurance Company (Europe) Limited (The Netherlands Branch)**
- **NIPPONKOA Nederland B.V.**
Eurocenter II Barbara Strozziilaan 370,
Amsterdam, THE NETHERLANDS

FRANCE

Paris

- **NIPPONKOA Insurance Company (Europe) Limited (France Branch)**
- ▲ **Paris Representative Office**
6, Square de l'Opéra Louis Jouvet,
75009 Paris, FRANCE

Bordeaux

- **Martin & Boulart SAS**
Immeuble Le Phenix – 264 boulevard
Godard – 33000, Bordeaux France

ITALY

Genova

- **NIPPONKOA Insurance Company (Europe) Limited (Italy Branch)**
Via XX Settembre 5/9,
16121 Genova, ITALY

RUSSIA

Moscow

- **OJSC IC Allianz, NKSJ Division**
- ▲ **Moscow Representative Office**
NKSJ Division, Allianz Building, 30,
Ozerkovskaya Nab., Moscow,
115184, RUSSIA

NORTH AMERICA

U.S.A.

New York

- ◆ **U.S. Branch**
- **NIPPONKOA Management Corporation (Headquarters)**
- ▲ **New York Representative Office**
14 Wall Street, Suite 812,
New York, 10005, U.S.A.

Hartford

- **NIPPONKOA Management Corporation (Hartford Office)**
- ▲ **The Travelers Marine Corporation**
One Tower Square, Hartford,
CT 06183, U.S.A.

Chicago

- **NIPPONKOA Management Corporation (Chicago Office)**
- ▲ **Chicago Representative Office**
180 North LaSalle Street, Suite 2503,
Chicago, IL 60601, U.S.A.

Los Angeles

- **NIPPONKOA Management Corporation (Los Angeles Office)**
- ▲ **Los Angeles Representative Office**
601 South Figueroa Street, Suite 2100,
Los Angeles, CA 90017, U.S.A.

Guam

- ◆ **Guam Branch**
- ▲ **Nanbo Guam Limited**
Post Office Box 2980 Haganta,
Guam 96932, U.S.A.

CANADA

Toronto

- ◆ **Canada Branch**
- ▲ **Toronto Representative Office**
- ▲ **St. Paul Fire and Marine Insurance Company**
Suite 200 P.O. Box 5,
20 Queen St. West Toronto,
Ontario M5H 3R3, CANADA

ASIA

SINGAPORE

Singapore

- ◆ **Singapore Branch**
- **NIPPONKOA Management Service (Singapore) Private Limited**
- ▲ **Singapore Representative Office**
50 Raffles Place,
#05-01/06 Singapore Land Tower
048623, REPUBLIC OF SINGAPORE

MALAYSIA

Kuala Lumpur

- **Lonpac Insurance Bhd**
* branches in 18 other cities and
one subsidiary in CAMBODIA
- ▲ **Kuala Lumpur Representative Office**
7th Floor, Bangunan Public Bank,
No. 6, Jalan Sultan Sulaiman, 50000
Kuala Lumpur, MALAYSIA

INDONESIA

Jakarta

■ **PT. Asuransi Sampo Japan Nipponkoa Indonesia**

* branches in 5 other cities

▲ **Jakarta Representative Office**

Mayapada Tower II, 19th Floor,
J1. Jenderal Sudiman Kav. 27,
Jakarta 12920, INDONESIA

PHILIPPINES

Manila

▲ **Manila Representative Office**

C/O Pioneer Insurance &
Surety Corporation, 7th Floor,
Pioneer House, 108 Paseo de Roxas,
Makati City, PHILIPPINES

THAILAND

Bangkok

■ **Sompo Japan Nipponkoa Insurance (Thailand) Public Company Limited**

12th Floor, Abdulrahim Place,
990 Rama 4 Road, Silom, Bangrak,
Bangkok, 10500, THAILAND

■ **NIPPONKOA Insurance Broker (Thailand) Company Limited**▲ **Bangkok Representative Office**

90/53 Sathorn Thani I Bldg.,
18th Floor, North Sathorn Rd.,
Silom, Bangrak, Bangkok,
10500, THAILAND

■ **The Navakij Insurance Public Company Limited**

* branches in 24 other cities
100/48-55, 90/3-6 Sathorn Nakorn Bldg.,
26th Flr., North Sathorn Rd., Silom,
Bangrak, Bangkok, 10500, THAILAND

Sriracha

○ **Sompo Japan Nipponkoa Insurance (Thailand) Public Company Limited**

98/16 Sukhumvit Road, Sriracha,
Cholburi, 20110, THAILAND

VIETNAM

Ho Chi Minh

▲ **Ho Chi Minh Representative Office**

16th Floor, Vincom Center,
72 Le Thanh Ton Street, District 1,
Ho Chi Minh City, VIETNAM

Hanoi

▲ **Hanoi Representative Office**

Tung Shing Square, 11th floor,
2 Ngo Quyan, Hanoi, VIETNAM

INDIA

New Delhi

▲ **New Delhi Representative Office**

The Masterpiece, SUITE-17,
Ground Floor, Golf Course Road,
Sector-54, Gurgaon 122002,
Haryana, INDIA

CAMBODIA

Phnom Penh

▲ **Phnom Penh Representative Office**

7th Floor, Campu Bank Building,
No. 23, Street 114, Phnom Penh,
Kingdom of Cambodia, P.O. Box 1556

CHINA

Shenzhen

■ **NIPPONKOA Insurance Company (China) Limited (Headquarters)**

No. 903-904, Kerry Plaza Tower 2,
No. 1 Zhong Xin Si Road Futian District,
Shenzhen, Guangdong 518048,
THE PEOPLE'S REPUBLIC OF CHINA

▲ **Shenzhen Representative Office**

Room 511, Fujian Industrial Bank Building,
No. 4013 Mintian Road, Futian District,
Shenzhen, Guangdong 518046,
THE PEOPLE'S REPUBLIC OF CHINA

Beijing

▲ **Beijing Representative Office**

Room 1001A, Fortune Building 10/F,
Dongsanhuan Beilu, Chaoyang District,
Beijing 100004,
THE PEOPLE'S REPUBLIC OF CHINA

Dalian

▲ **Dalian Representative Office**

805 Dalian Asia Pacific Finance Centre 55
Ren Min Road, Dalian, Liaoning 116001,
THE PEOPLE'S REPUBLIC OF CHINA

Qingdao

■ **NIPPONKOA Insurance Company (China) Limited (Shandong Branch)**

Room 1601, The HNA Center, 234
Yan'an 3rd Road, Shinan District, Qingdao,
Shandong 266071,
THE PEOPLE'S REPUBLIC OF CHINA

Hong Kong

■ **NIPPONKOA Insurance Company (Asia) Limited**▲ **Hong Kong Representative Office**

Room 1901, Lincoln House, Taikoo Place,
979 King's Road, Island East, Hong Kong
S.A.R., THE PEOPLE'S REPUBLIC
OF CHINA

TAIWAN

Taipei

▲ **Taipei Representative Office**

Room 1403, No. 205, Sec. 1,
Tun-Hwa S Road, Taipei, TAIWAN

OCEANIA

AUSTRALIA

Sydney

◆ **Australia Branch**△ **Allianz Australia Insurance Limited**▲ **Sydney Representative Office**

Allianz Centre,
Forecourt Building, Level 12,
2 Market Street, Sydney, N.S.W. 2000,
AUSTRALIA

Shares and Shareholders

■ Share Information (As of July 1, 2013)

Fiscal year:	April 1 through March 31 of the following year
Annual General Meeting of Shareholders:	Held within three months of the end of each fiscal year
Record date for year-end dividends and voting rights:	March 31 * Record date for interim dividends: September 30 (When we pay an interim dividend)
Share-trading lot size:	100
Shareholder registry administrator:	Mitsubishi UFJ Trust and Banking Corporation
Public notices:	NKSJ Holdings issues public notices electronically (http://www.nksj-hd.com/) (Japanese only). *If a public notice cannot be issued electronically, it will be published in the Nihon Keizai Shimbun (newspaper).
Exchange Listings:	Tokyo Stock Exchange (First Section)

■ Matters for the General Meeting of Shareholders

The 3rd General Meeting of Shareholders was held on June 24, 2013. The matters to be reported and the matters to be resolved were as follows:

Matters to be Reported

1. The business report, the consolidated financial statements and the audit reports by the accounting auditors and the board of auditors for FY2012 (April 1, 2012 to March 31, 2013)
2. The financial statements for FY2012 (April 1, 2012 to March 31, 2013)

Matters to be Resolved

Proposal No. 1 Disposition of Retained Earnings

Proposal No. 2 Appointment of Twelve Directors

Proposal No. 3 Appointment of Two Auditors

The proposals were approved as initially proposed.

■ Distribution and Shares (As of March 31, 2013)

Summary of Issued Shares

Type of shares:	Common Share
Total number of authorized shares:	1,200,000,000
Total number of shares outstanding:	415,352,294
Total number of shareholders:	51,412

Types of Shareholders

	Number of Shareholders	Number of Shares Held (Thousands)	Portion of Shares Outstanding (%)
National and Regional Governmental Organizations	2	8	0.00
Financial Institutions	180	148,238	35.69
Securities Companies	58	16,868	4.06
Other Corporations	1,195	41,610	10.02
Foreign Investors	470	157,147	37.83
Individuals and Others	49,507	51,478	12.40
Total	51,412	415,352	100.00

■ Major Shareholders (As of March 31, 2013)

Name of Shareholder	Number of Shares Held (Thousands)	Portion of Shares Outstanding (%)
STATE STREET BANK AND TRUST COMPANY	23,407	5.64
Japan Trustee Services Bank, Ltd. (Trust account)	15,895	3.83
The Master Trust Bank of Japan, Ltd. (Trust account)	14,920	3.59
CBNY-ORBIS FUNDS	14,754	3.55
NKSJ Holdings Employee Shareholders Association	12,711	3.06
CBNY-ORBIS SICAV	12,479	3.00
The Dai-ichi Life Insurance Company, Limited	10,227	2.46
SSBT OD05 OMNIBUS ACCOUNT - TREATY CLIENTS	8,259	1.99
Nippon Express Co., Ltd.	8,001	1.93
Mizuho Corporate Bank, Ltd.	4,902	1.18

Notes: The number of shares held by The Dai-ichi Life Insurance Company, Limited includes 4,492 thousand shares contributed by that company as trust assets for a retirement benefit trust (In the shareholder register, the shares are listed in the name of Mizuho Trust & Banking Co., Ltd., Dai-ichi Life Insurance Retirement Benefit Trust).

Status of Shares Held

Sompo Japan

The number of companies and carrying amount on the balance sheet in which equity investments are held for purposes other than pure investment

1,638 companies ¥1,026,997 million

<Top 50 shares held>

• Specific shares held

Purpose for which shares are held: To maintain and strengthen business relationships

Company Name	Number of Shares (Shares)	Carrying Amount on the Balance Sheet (Millions of yen)
Honda Motor Co., Ltd.	21,896,600	77,842
Canon Inc.	18,799,987	63,919
Marubeni Corporation	56,110,000	39,445
The Dai-ichi Life Insurance Company, Limited	300,000	37,950
Hulic Co., Ltd.	47,578,800	36,778
NISSAN MOTOR CO., LTD.	37,928,000	34,324
SUZUKI MOTOR CORPORATION	9,500,000	20,054
ITOCHU Corporation	13,015,000	14,719
TOYOTA MOTOR CORPORATION	3,000,900	14,584
Murata Manufacturing Co., Ltd.	2,039,200	14,294
AISIN SEIKI CO., LTD.	4,100,000	14,145
Panasonic Corporation	20,000,000	13,080
NITTO DENKO CORPORATION	2,310,800	12,871
JFE Holdings, Inc.	7,038,669	12,437
JX Holdings, Inc.	23,866,580	12,434
Fuji Heavy Industries Ltd.	8,202,490	11,983
Suruga Bank Ltd.	7,655,000	11,627
YAMATO HOLDINGS CO., LTD.	6,033,900	10,498
Mizuho Financial Group, Inc.	49,427,690	9,836
BRIDGESTONE CORPORATION	2,630,000	8,337
Ajinomoto Co., Inc.	5,189,500	7,343
Tokyo Tatemono Co.,Ltd.	10,484,000	6,908
The Bank of Kyoto, Ltd.	7,512,000	6,896
East Japan Railway Company	871,200	6,725
Hitachi, Ltd.	11,681,032	6,342
AEON CO., LTD.	5,041,600	6,125
Odakyu Electric Railway Co., Ltd.	5,140,000	6,018
Keikyu Corporation	6,057,000	5,966
Sharp Corporation	21,496,000	5,846
ASAHI KASEI CORPORATION	9,123,000	5,729
The Bank of Yokohama, Ltd	10,017,000	5,459
Showa Denko K.K.	36,867,600	5,198
The Iyo Bank, Ltd.	5,471,000	4,863
Mazda Motor Corporation	17,081,000	4,799

Company Name	Number of Shares (Shares)	Carrying Amount on the Balance Sheet (Millions of yen)
NIPPON PAINT CO., LTD.	5,104,000	4,787
Nissan Chemical Industries, Ltd.	3,880,000	4,396
NICHIREI CORPORATION	7,742,000	4,343
ISUZU MOTORS LIMITED	7,751,000	4,301
ZENKOKU HOSHO Co.,Ltd	1,200,000	4,230
The Yokohama Rubber Company, Limited	3,906,000	4,226
Fuyo General Lease Co.,Ltd.	1,152,400	4,079
Fukuoka Financial Group, Inc.	8,408,793	4,061
Kawasaki Heavy Industries, Ltd.	13,239,000	3,905
KONICA MINOLTA HOLDINGS, INC.	5,551,000	3,819
Kawasaki Kisen Kaisha, Ltd.	19,107,000	3,802
MITSUBISHI GAS CHEMICAL COMPANY, INC.	5,995,850	3,723
The Hiroshima Bank, Ltd.	7,900,000	3,634
NSK Ltd.	5,074,000	3,627

• Shares subject to deemed holding

Purpose for which shares are held: To secure the ability to exercise voting rights

Company Name	Number of Shares (Shares)	Carrying Amount on the Balance Sheet (Millions of yen)
Honda Motor Co., Ltd.	8,900,000	31,639
Murata Manufacturing Co., Ltd.	550,000	3,855

Note: Specific shares for investment and shares subject to deemed holding have not been combined at the time of selecting the aforementioned companies recorded on the balance sheet.

Nipponkoa

The number of companies and carrying amount on the balance sheet in which equity investments are held for purposes other than pure investment

957 companies ¥560,302 million

<Top 50 shares held>

• Specific shares held

Purpose for which shares are held: To maintain and strengthen business relationships

Company Name	Number of Shares (Shares)	Carrying Amount on the Balance Sheet (Millions of yen)
Shin-Etsu Chemical Co., Ltd.	5,177,556	32,359
ITOCHU Corporation	27,556,714	31,166
TOSHIBA CORPORATION	51,308,000	24,217
NIPPON EXPRESS CO., LTD.	50,967,522	23,394
The Chiba Bank, Ltd.	29,998,468	20,248
RICOH COMPANY, LTD.	18,197,414	18,270
Ajinomoto Co., Inc.	12,073,994	17,084
Komatsu Ltd.	7,323,448	16,470
The Joyo Bank, Ltd.	28,973,000	15,268
Honda Motor Co., Ltd.	3,630,000	12,904
Shiseido Company, Limited	8,477,497	11,249
Mitsubishi UFJ Financial Group, Inc.	15,673,975	8,746
TOYOTA MOTOR CORPORATION	1,697,418	8,249
T&D Holdings, Inc.	7,228,810	8,211
Astellas Pharma Inc.	1,569,544	7,941
LPI CAPITAL BHD	18,902,400	7,827
NIPPON MEAT PACKERS, INC.	4,990,000	7,739
The Hiroshima Bank, Ltd.	16,687,911	7,676
THE SHIGA BANK, LTD.	11,651,260	7,480
Shionogi & Co., Ltd.	3,846,791	7,474
Seven & i Holdings Co., Ltd	2,307,002	7,186
The Keiyo Bank, Ltd.	12,619,128	6,738
Fuji Heavy Industries Ltd.	3,954,540	5,777
FUKUYAMA TRANSPORTING CO.,LTD.	10,087,304	5,406
JX Holdings, Inc.	10,251,645	5,341
YAMAZAKI BAKING CO., LTD.	4,168,396	5,335
Isetan Mitsukoshi Holdings Ltd.	3,892,767	5,286
Kawasaki Heavy Industries, Ltd.	17,338,999	5,115
NOK CORPORATION	3,780,700	5,103
The Juroku Bank, Ltd.	12,338,080	4,762
HISAMITSU PHARMACEUTICAL CO., INC.	881,102	4,528
YAKULT HONSHA CO., LTD.	1,114,760	4,241
Keio Corporation	4,938,421	3,995
The Hachijuni Bank, Ltd.	6,515,541	3,707

Company Name	Number of Shares (Shares)	Carrying Amount on the Balance Sheet (Millions of yen)
Mazda Motor Corporation	12,470,200	3,504
North Pacific Bank,Ltd.	10,866,480	3,444
The Hyakugo Bank, Ltd.	7,230,274	3,390
The Iyo Bank, Ltd.	3,762,421	3,344
AEON CO., LTD.	2,639,688	3,207
The Hokkoku Bank, Ltd.	7,883,395	3,098
NIPPON KONPO UNYU SOKO CO.,LTD.	2,006,470	2,943
OMRON Corporation	1,170,247	2,714
East Japan Railway Company	350,000	2,702
TOKYU CORPORATION	3,803,718	2,696
The Daishi Bank,Ltd.	6,947,144	2,667
Showa Sangyo Co., Ltd.	8,545,501	2,657
Sekisui Chemical Co., Ltd.	2,531,080	2,612
Keisei Electric Railway Co.,Ltd.	2,445,000	2,452

• Shares subject to deemed holding

Purpose for which shares are held: To secure the ability to exercise voting rights

Company Name	Number of Shares (Shares)	Carrying Amount on the Balance Sheet (Millions of yen)
TOSHIBA CORPORATION	9,500,000	4,484
Seven & i Holdings Co., Ltd	913,000	2,843

Note: Specific shares for investment and shares subject to deemed holding have not been combined at the time of selecting the aforementioned companies recorded on the balance sheet.

NKSJ Holdings, Subsidiaries and Affiliates

(As of March 31, 2013)

Consolidated
Financial Highlights

About
the NKSJ Group

Message from
the Management

Interview with
the President

Review of
Operations

Management
Structure

The NKSJ Group's
Approach to CSR

Financial Section

Corporate
Information

The NKSJ Group consists of NKSJ Holdings, Inc., 74 subsidiaries and 18 affiliates. The Group is engaged in property and casualty insurance business, life insurance business and other business.

Major group companies are as follows.

Property and casualty insurance business

- Sompo Japan Insurance Inc.
- NIPPONKOA Insurance Company, Limited
- Sompo 24 Insurance Company Limited
- SAISON AUTOMOBILE AND FIRE INSURANCE COMPANY, LIMITED
- Japan Insurance Service Inc.
- Sompo Japan Nipponkoa Holdings (Americas) Inc. <USA>
- Sompo Japan Insurance Company of America <USA>
- Sompo Japan Insurance Company of Europe Limited <UK>
- NIPPONKOA Insurance Company (Europe) Limited <UK>
- NIPPONKOA Management Services (Europe) Limited <UK>
- Sompo Japan Sigorta Anonim Sirketi <Turkey>
- Sompo Japan Asia Holdings Pte. Ltd. <Singapore>
- Tenet Sompo Insurance Pte. Ltd. <Singapore>
- Tenet Insurance Company Limited <Singapore>
- Berjaya Sompo Insurance Berhad <Malaysia>
- Sompo Japan Insurance (China) Co., Ltd. <China>
- NIPPONKOA Insurance Company (China) Limited <China>
- Sompo Japan Nipponkoa Insurance (Hong Kong) Company Limited <China>
- NIPPONKOA Insurance Company (Asia) Limited <China>
- Yasuda Seguros S.A. <Brazil>
- ★ Hitachi Capital Insurance Corporation
- ★ Universal Sompo General Insurance Company Limited <India>
- ★ Maritima Seguros S.A. <Brazil>
- ★ Maritima Saude Seguros S.A. <Brazil>

Life insurance business

- NKSJ Himawari Life Insurance, Inc.
- Sompo Japan DIY Life Insurance CO., LTD.

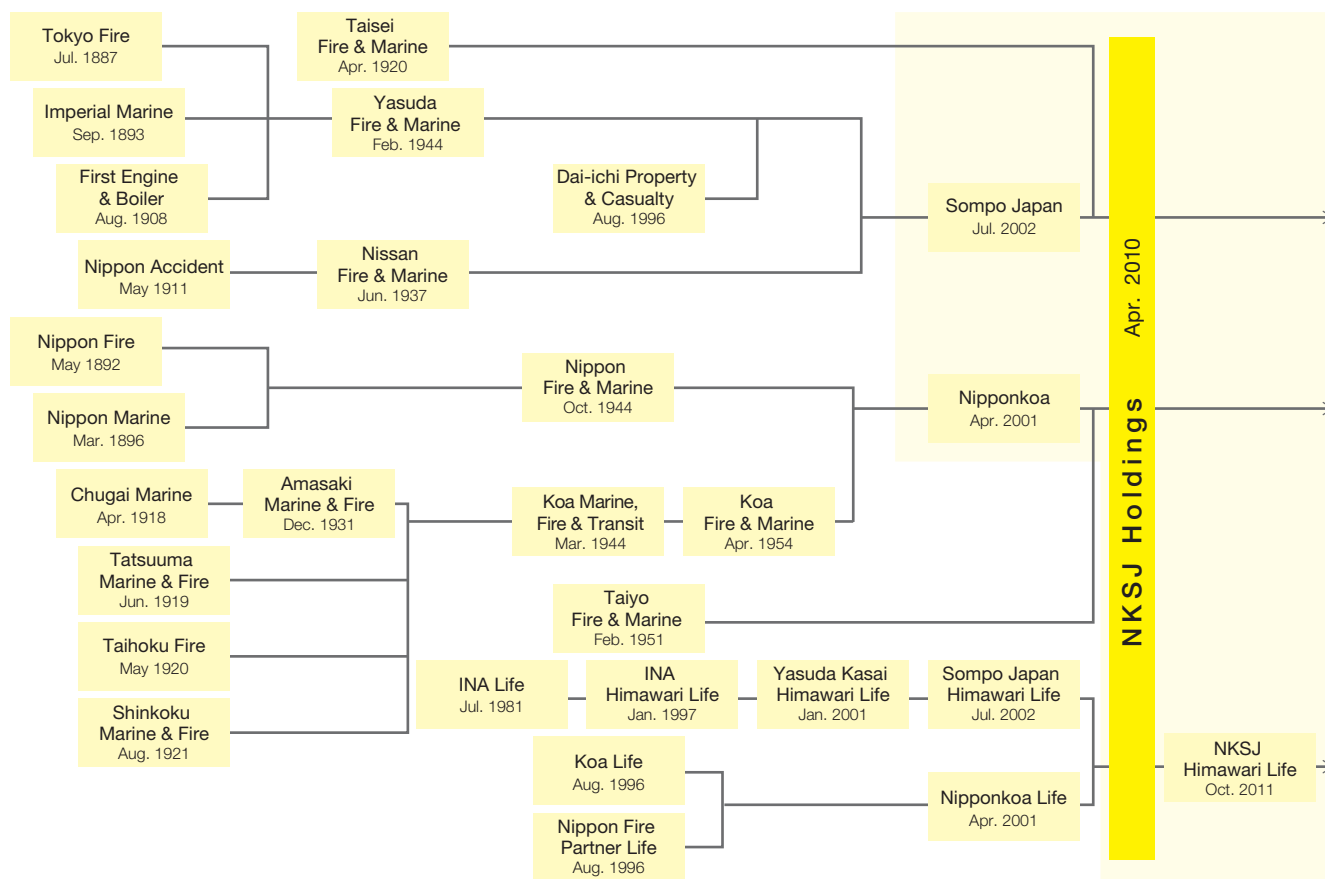
Other business

- Sompo Japan DC Securities Inc. (Defined contribution pension plan business and fund sales business)
- SOMPO JAPAN NIPPONKOA ASSET MANAGEMENT CO., LTD. (Investment advisory service and fund trust management service)
- Healthcare Frontier Japan Inc. (Consulting service regarding health and care such as prevention of disease)

Note: The definitions of each sign are as follows. ● : Consolidated subsidiary ★ : Affiliate accounted for under the equity method

NKSJ History

2010	April	NKSJ Holdings, Inc., was established. NKSJ Holdings was listed on the Tokyo Stock Exchange (First Section) and the Osaka Securities Exchange (First Section).
	May	Sompo Japan acquired 100% of shares in Tenet Insurance Company Ltd, a Singapore P&C insurance company, making Tenet a consolidated subsidiary of NKSJ Holdings.
	October	Sompo Japan Asset Management Co., Ltd. and ZEST Asset Management Ltd. were merged into Sompo Japan Nipponkoa Asset Management Co., Ltd.
	November	N.K. Risk Consulting Co., Ltd. transferred its relevant operations to Sompo Japan Risk Management, Inc. which was then renamed to NKSJ Risk Management, Inc. Sompo Japan acquired 99.07% of Fiba Sigorta Anonim Sirketi, a P&C insurance company in Turkey, making Fiba Sigorta a consolidated subsidiary of NKSJ Holdings. The company name was changed to Sompo Japan Sigorta A.S. in February 2011.
2011	April	Sompo Japan System Solutions Inc. and N.K. Systems, Limited were merged into NKSJ Systems, Inc. Sompo Japan Information Services Inc. and Nipponkoa Business Services, Co., Ltd. were merged into NKSJ Business Services, Inc.
	June	Sompo Japan acquired an additional 40% of the issued ordinary shares of Berjaya Sompo Insurance Berhad, through Sompo Japan Asia Holdings Pte. Ltd., making Berjaya Sompo a consolidated subsidiary of NKSJ Holdings and bringing our stake to 70% ownership.
	October	Sompo Japan Himawari Life Insurance Co., Ltd. and Nipponkoa Life Insurance Company, Limited were merged into NKSJ Himawari Life Insurance, Inc.
2012	April	Prime Assistance Inc. was established to enter the assistance services business.
	September	Sompo Japan acquired 34% shares of Cedar Co., Ltd. to enter the nursing care service business.
2013	January	Sompo Japan Nipponkoa Holdings (Americas) Inc., the holding company for operations in North America, was established and became a consolidated subsidiary of NKSJ Holdings.
	June	P.T. Sompo Japan Insurance Indonesia and P.T. Asuransi NIPPONKOA Indonesia were merged into PT. Asuransi Sompo Japan Nipponkoa Indonesia. Yasuda Seguros S.A. acquired an additional 37% of common shares and 21.8% of preferred shares of Maritima Seguros S.A., making Maritima Seguros S.A. and Maritima Saude Seguros S.A. subsidiaries of NKSJ Holdings.



Corporate Data

(As of March 31, 2013)

Consolidated
Financial Highlights

About
the NKSJ Group

Message from
the Management

Interview with
the President

Review of
Operations

Management
Structure

The NKSJ Group's
Approach to CSR

Financial Section

Corporate
Information

Company name:	NKSJ Holdings, Inc.
Established:	April 1, 2010
Capital:	100 billion yen
Head office:	26-1, Nishi-Shinjuku 1-chome, Shinjuku-ku, Tokyo, Japan 160-8338 Telephone: 03-3349-3000 (operator)
Representative Director, Chairman and Executive Officer:	Masaya Futamiya
Representative Director, President and Executive Officer:	Kengo Sakurada
Business activities:	Management of P&C insurance companies, life insurance companies, and other companies controlled as subsidiaries pursuant to the Insurance Business Law, and other operations incidental thereto.
Employees:	276
URL:	http://www.nksj-hd.com/
Independent auditors:	Ernst & Young ShinNihon LLC

Rating Information for NKSJ Group Companies

Listed below are credit ratings for NKSJ Group companies as of July 1, 2013.*

Rating agency	Sompo Japan	Nipponkoa	NKSJ Himawari Life	Saison Automobile & Fire
Standard & Poor's	A+	A+	A+	—
Moody's	A1	—	—	—
R&I	AA-	AA-	AA-	—
JCR	AA	—	—	A
A.M. Best	A+	A+	—	—

* Only ratings commissioned by the Group are shown.

For further information, please contact us via e-mail below:
E-mail: ir@nksj-hd.co.jp

NKSJ HOLDINGS

NKSJ Holdings, Inc.

26-1, Nishi-Shinjuku 1-chome, Shinjuku-ku, Tokyo, 160-8338, Japan
<http://www.nksj-hd.com/>



E7-19-0212