

Civil society groups

▶ **Prevention of Road Traffic Accidents**

▶ **Health Promotion**

▶ **Contributing to Welfare**

▶ **Conservation of Biodiversity**

▶ **Solutions for Environmental Issues**

▶ **Contributing to Community through the Arts and Culture**

Prevention of Road Traffic Accidents

Road Safety Project in Indonesia

Products & Service

Road safety is an important social issue in Indonesia, where the number of traffic fatalities is now the highest in Southeast Asia. Drawing on Japan's expertise in preventing traffic accidents, Sampo Japan Nipponkoa and PT. Asuransi Sampo Japan Nipponkoa Indonesia have teamed up with Save the Children Japan, international civil society specialized in child support, to launch a road safety project in Bandung City, West Java. This joint project aims to enhance a safer mind as well as safer environment related to road safety around the schools liaising with local administration. Over a four-year period, we have provided traffic safety education for teachers and students at 30 elementary and middle schools, improved transportation infrastructure near the schools, and appealed to regional and national governments. Over 20,000 people have participated in this project as of today.



©Save the Children in Indonesia

Health Promotion

Maternal and Child Health Project in Myanmar

Products & Service

Mortality rates among mothers and children under five are higher in Myanmar than in neighboring countries in Southeast Asia, and about 90% of those deaths are concentrated in rural areas. Against that backdrop, Sampo Japan Nipponkoa has been working in cooperation with Save the Children Japan on a project to improve maternal and child health in rural areas. Efforts are under way through this project to train personnel who can provide improved health services for mothers and children, with the aim of reducing the mortality risk of newborns as well as expectant and nursing mothers.



©Save the Children Myanmar

Contributing to Welfare

Supporting Activities and Researches for Social Welfare — Sompo Japan Nipponkoa Welfare Foundation

Partnerships

The Sompo Japan Nipponkoa Welfare Foundation, established in 1977, conducts various programs, including providing financial assistance to civil society organizations in Japan, ASEAN countries and India; holding academic conferences and funding research on social welfare, social security, insurance, and gerontology; and awarding outstanding academic papers. Aware of the rapid aging of society, it also promotes solutions to increasingly complex social issues, including supporting families who provide home care to an elderly member with dementia or other conditions, and providing scholarships for students studying to become certified care workers. Its programs are designed to meet contemporary needs through both research and practice.

●Support for Purchase of Vehicles

Since 1999, the foundation has financially supported organizations that need to purchase vehicles for their welfare activities for people with disabilities. In fiscal year 2016, the foundation invited applications from western Japan and selected ten organizations. Vehicles that these organizations purchased help them expand the geographical area and scope of their activities and have led to the increase in income of people with disabilities and in the number of users of their welfare services.



A truck delivering much-anticipated ponies to children with disabilities

● Support for Organizational and Operational Reinforcement of Civil Society Groups

In 2004, the foundation started to provide financial support for organizational and operational reinforcement of civil society organizations that render welfare services to communities. In fiscal year 2016, financial support was provided to 41 organizations in total through programs to strengthen their organizational and operational activities, and to help them acquire official status as approved specified non-profit corporations. The foundation supports the development of high-quality, sustainable nonprofit organization that play key roles in their communities.



A child does a "high five" with CliniClowns in the hospital

● Support for Overseas Welfare Activities

The foundation has supported civil society organizations in the field of social welfare in ASEAN countries and India since 2010. In fiscal year 2016, it provided funds to projects by five organizations in five countries, including improvements in kindergartens (Cambodia), and donations of helmets to school children. The donation aims for raising awareness about the dangerous drunk driving of motorcycles and the importance of helmet use (Thailand).



Presentation ceremony in Cambodia



Presentation ceremony in Thailand

● **Sompo Japan Nipponkoa Welfare Foundation Award**

The foundation has awarded outstanding academic literature in the field of social welfare since fiscal year 1999. In fiscal year 2016, the award went to Prof. Kazushige Kinugasa for his work entitled, “Values and Principles in Social Work: A Scientific Approach to Practice, and Its Logical Structure.” In July 2016, the foundation held a commemorative lecture and symposium featuring last year’s recipient, Ms. Yoko Aoyama, where she presented her work to many people.



FY2016 Sompo Japan Nipponkoa Welfare Foundation Award



Symposium and commemorative lecture in July 2016

● **Support for Networking and Learning of Family Caregivers for the Elderly**

Since 1991, the foundation has provided support for networking events and learning programs intended to help reduce the stress of family caregivers caring at home for elderly dementia patients, and improve their care-giving skills. In fiscal year 2016, the foundation started a new grant program to support training seminars, and grants were given out to 18 organizations, including some that support family caregivers.



● Scholarships for Students Studying to Become Certified Care Workers

To boost the workforce of caregivers, the foundation offers scholarships for students in two-year vocational school programs. In fiscal year 2016, the foundation gave scholarships to 20 students in total (10 in first grade and 10 in second grade). In the 25 years since this program began in 1992, the foundation has offered scholarships to 258 students and many of them today are playing an active role as care professionals.



Practicum for students to become certified care workers

● Financial Support for Gerontology Research

The foundation provides financial support for creative and innovative research in the field of social sciences relating to gerontology. Sixteen recipients received funds in fiscal year 2016. In addition, the foundation organizes study groups on the Insurance Business Act, welfare management, gerontology, and other topics. The foundation also publishes a report series and distributes it widely to libraries and elsewhere to spread information about research findings.



Gerontology research grant presentation ceremony for Tokyo region



Symposium held by study group on welfare management

Heart & Arts Program: Assistance for Art Activities by Persons with Disabilities

Arts & Culture

Sompo Chikyu (Earth) Club is a volunteer organization comprised of our employees. Together with the Public Resources Foundation, it is promoting the Heart & Arts Program, which provides funding for art-related activities by persons with disabilities. In fiscal year 2016, it provided a total of six million yen to 12 organizations.

● Summary of Funding by Heart & Arts Program

The arts (including visual arts, music, and performing arts activities) have the power to bring out the best in people. This program — by funding art activities by persons with disabilities, as well as programs to support and promote them — aims to increase the opportunities for persons with disabilities to express themselves freely, and to contribute to creating a society where anyone can live a fulfilling life. We invited applications for the following activities. The selection criteria are whether or not the applied activities will contribute to the future expansion of programs relating to art for persons with disabilities in the applicant organization.

[Eligible activities for funding]

- Art activities in which persons with disabilities will participate or be active (crafts, workshops, creations, etc.)
- Activities that support art activities of persons with disabilities (holding lectures, dispatch of lecturers, networking, etc.)
- Activities that promote art activities of persons with disabilities (events, publications, exhibitions, etc.)
- Creation of opportunities to present art activities of persons with disabilities (concerts, stage events, etc.)

* Note: Art activities include visual arts, music, and performing arts activities.

[Eligible organizations]

Non-profit organizations (incorporated or unincorporated) including social welfare corporations, public interest corporations, general incorporated associations and voluntary organizations, etc.



Conservation of Biodiversity

SAVE JAPAN Project

Partnerships

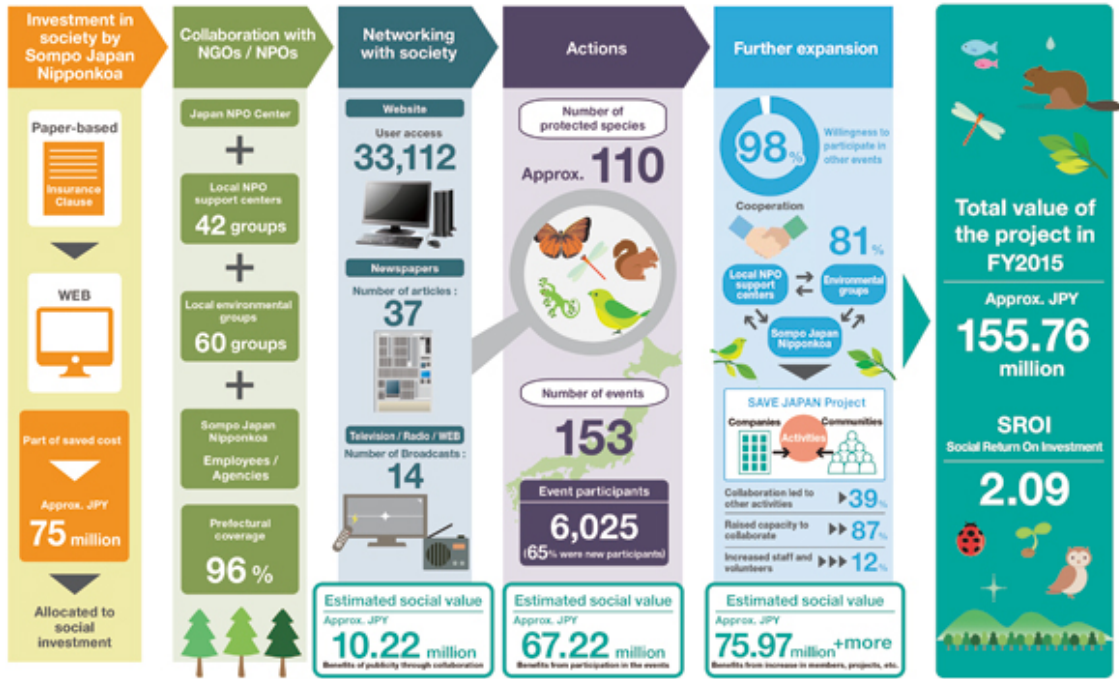
When our customers select web-based insurance policy or terms and conditions, or choose recycled parts for vehicle accident repairs, the cost savings are used to fund projects to conserve the environment inside and outside Japan, and achieve sustainable society while inspiring future leaders. Partnerships with civil society groups provide opportunities for people to take a greater interest in the environment in their local communities and work towards a sustainable society. As of March 31, 2017, 32,175 people have participated in 647 events. In fiscal year 2013 we began quantifying the social value of this project using SROI* analysis, which drives collective impact of various stakeholders that strive for sustainable solutions, to improve and expand our programs. This three-year initiative represents the first instance in Japan of using SROI analysis in the area of biodiversity conservation. The SROI of the project in fiscal year 2015, the final year, was 2.00, calculated from a social value (total benefit) of 148.83 million yen and costs of 74.55 million yen. The SROI significantly exceeds the value of 1, indicating that the project is effective, and it has increased from 1.12 in fiscal year 2013 and 1.76 in fiscal year 2014, showing a ripple effect over the long term and increasing benefits of social investment.

Since fiscal year 2016, we have been working to provide new opportunities for residents to participate and expand the project on the concept of “creating a good environment for living things,” by making greater use of the uniqueness of local communities in cooperation with various local stakeholders.

* Social Return on Investment (SROI) is a method of quantifying the effectiveness of a project, and is calculated by dividing the social value (total benefit) an initiative produces by the cost of implementing it.

SAVE JAPAN Project

Save Rare Species and the Natural Environment in Japan!
Estimating social value of the project in FY2015



Solutions for Environmental Issues

Human Resources Development for Environmental Protection — Sompo Japan Nipponkoa Environment Foundation

Partnerships

Sompo Japan Nipponkoa Environment Foundation, based on its philosophy of “raising stewards of the environment,” supports education, capacity building, action and research in conservation and other environmental fields with the goal of contributing to global environmental protection. The foundation, working with the Japan Environmental Education Forum and Sompo Japan Nipponkoa, organizes a series of Public Seminars on the Environment that have attracted more than 18,948 participants since the program’s start in 1993. Its CSO^{*1} Learning Scholarship Program, meanwhile, is an eight-month internship program for undergraduate and graduate students desiring working experience at an environmental organization. As of March 31, 2017, the program has given 955 students opportunities to learn about environmental issues and civil society. In addition, since 2001 the foundation has provided academic research funding for graduate students’ costs of writing PhD papers, to support outstanding young researchers who are inspired to write on environmental themes.

*1 Civil Society Organization

Contributing to Community through the Arts and Culture

Sompo Art Fund: Building a Creative Future Society

Arts & Culture

Sompo Japan Nipponkoa established the Sompo Art Fund in June 2016 to contribute to international exchanges and a harmonious society through support for unique art projects and international art festivals around Japan. At our Headquarters Building in Shinjuku and elsewhere, to help build a creative future society, the Sompo Art Fund provides opportunities for recipients to share the vision, and organizes kickoff meetings for networking of people who are involved in arts and cultural activities as well as presentations of good practices. During fiscal year 2016 the fund supported 18 arts and cultural activities across Japan.



Sanriku International Art Festival 2016