

Corporate Data

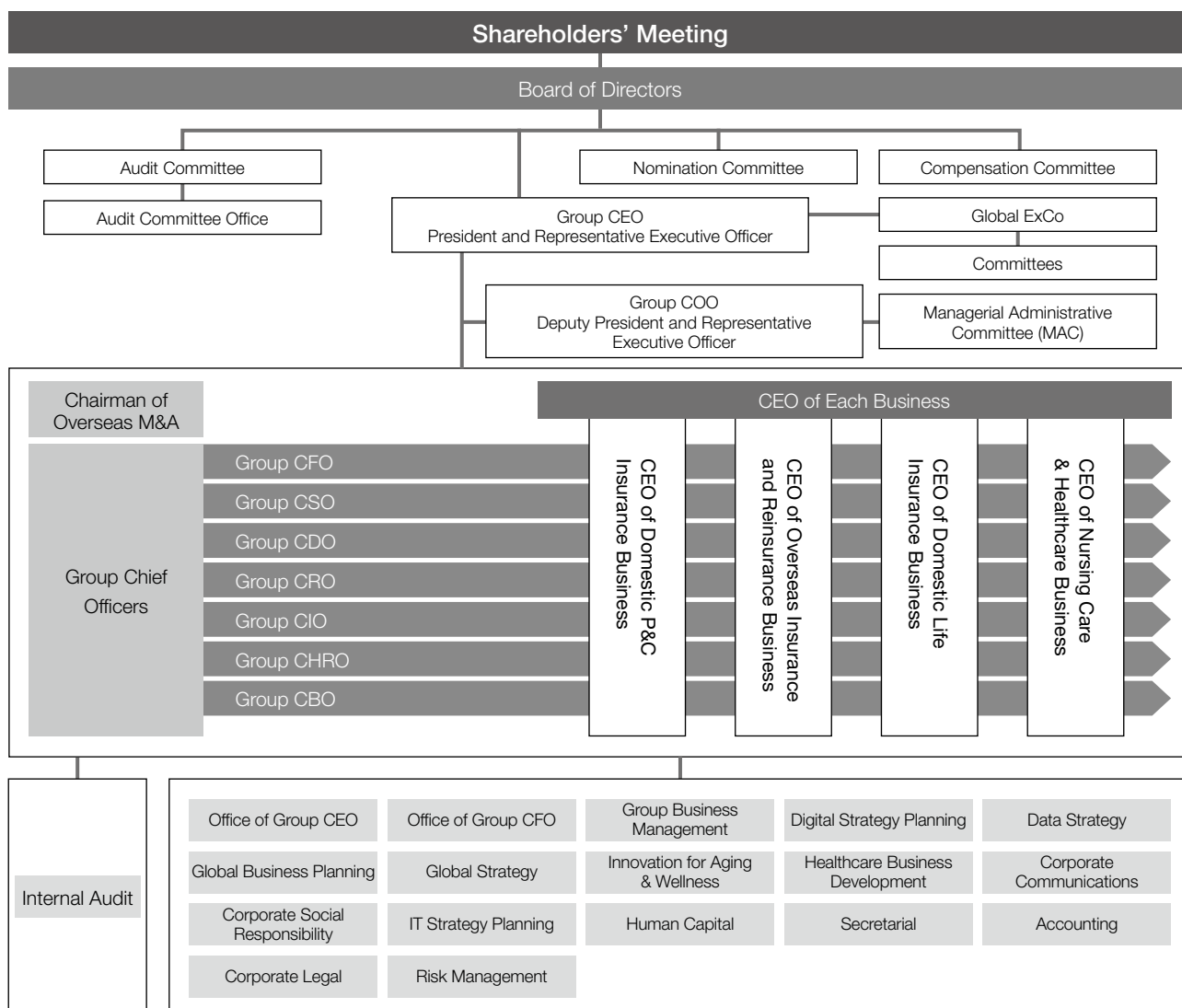
Corporate Overview	174
Share and Shareholder Information	175
The Company, Subsidiaries, and Affiliates	177

Corporate Overview

Company name:	Sompo Holdings, Inc.
Date of establishment:	April 1, 2010
Capital:	¥100 billion
Head office:	26-1, Nishi-Shinjuku 1-chome, Shinjuku-ku, Tokyo 160-8338, Japan
Group CEO, Director, President and Representative Executive Officer:	Kengo Sakurada
Employees:	323*
Business activities:	Management of P&C insurance companies, life insurance companies, and other companies controlled as subsidiaries pursuant to the Insurance Business Law, and other related operations
Exchange listing:	Tokyo Stock Exchange (First Section)
URL:	https://www.sompo-hd.com/en/

* As of March 31, 2020

Organization Chart



An organization and Group CEO and other such titles use the following abbreviations:
 Global ExCo: Global Executive Committee; Group CEO: Group Chief Executive Officer / Group COO: Group Chief Operating Officer / Group CFO: Group Chief Financial Officer / Group CSO: Group Chief Strategy Officer / Group CDO: Group Chief Digital Officer / Group CRO: Group Chief Risk Officer / Group CIO: Group Chief Information Officer / Group CHRO: Group Chief Human Resource Officer / Group CBO: Group Chief Brand Officer

Share and Shareholder Information

Share Information

(As of July 1, 2020)

1. Fiscal year: April 1 of each year through March 31 of the following year
2. Annual General Meeting of Shareholders: Held within 3 months of the end of each fiscal year
3. Record date for year-end dividends and voting rights: March 31
Note: Record date for interim dividends: September 30
4. Share-trading lot size: 100
5. Shareholder registry administrator: Mizuho Trust & Banking Co., Ltd.
6. Public notices: Sampo Holdings issues public notices electronically.
(<https://www.sampo-hd.com/>)
Note: If a public notice cannot be issued electronically, it will be published in the *Nikkei* (newspaper).
7. Exchange listing: Tokyo Stock Exchange (First Section)

Matters for the General Meeting of Shareholders

The 10th General Meeting of Shareholders was held on June 22, 2020. The matters to be reported and the matters to be resolved were as follows:

Matters to Be Reported

1. The business report, the consolidated financial statements, and the audit reports on the consolidated financial statements by the accounting auditors and the Audit Committee for fiscal 2019 (April 1, 2019 to March 31, 2020)
2. The financial statements for fiscal 2019 (April 1, 2019 to March 31, 2020)

Matters to Be Resolved

- Proposal No. 1: Disposition of Retained Earnings
Proposal No. 2: Appointment of 12 Directors
The proposals were approved as initially proposed.

Share and Shareholder Information

Distribution and Shares

(As of March 31, 2020)

1. Equity Shares

(1) Type of shares	Common shares
(2) Total number of authorized shares	1,200,000,000
(3) Total number of shares outstanding	373,330,489 (Including treasury stock)
(4) Total number of shareholders	42,646

2. Types of Shareholders

Category	Number of Shareholders	Number of Shares Held (Thousands)* ¹	Portion of Shares Outstanding (%)* ²
National and Regional Governmental Organizations	2	8	0.00
Financial Institutions	161	142,262	38.11
Securities Companies	52	9,514	2.55
Other Corporations	985	28,792	7.71
Foreign Investors	809	147,528	39.52
Individuals and Others	40,637	45,223	12.11
Total	42,646	373,330	100.00

*1 Numbers of shares held are truncated to the unit displayed.

*2 Portions of shares outstanding are rounded to the unit displayed.

Top 10 Shareholders

(As of March 31, 2020)

Name of Shareholder	Number of Shares Held (Thousands)	Portion of Shares Outstanding (Excluding Treasury Stock) (%)
The Master Trust Bank of Japan, Ltd. (Trust account)	30,431	8.33
JP MORGAN CHASE BANK 380055	23,572	6.46
Japan Trustee Services Bank, Ltd. (Trust account)	19,270	5.28
GOVERNMENT OF NORWAY	18,579	5.09
Japan Trustee Services Bank, Ltd. (Trust account 7)	9,743	2.67
Sompo Holdings Employee Shareholders Association	8,659	2.37
Japan Trustee Services Bank, Ltd. (Trust account 9)	8,327	2.28
NIPPON EXPRESS CO., LTD.	8,001	2.19
Japan Trustee Services Bank, Ltd. (Trust account 5)	7,554	2.07
JP MORGAN CHASE BANK 385151	5,972	1.64

Note: 1. In addition to the above, the Company holds 8,152 thousand shares of treasury stock. This number of treasury stock does not include 1,053 thousand shares of the Company's stock held by Mizuho Trust & Banking Co., Ltd. (Re-entrusted entity: Trust & Custody Services Bank, Ltd. (Trust E account) established for the "Board Benefit Trust (BBT)" plan.).

2. The portion of shares outstanding has been calculated by deducting treasury stock (8,152 thousand shares).

3. The number of shares held by NIPPON EXPRESS CO., LTD., includes 1,600 thousand shares contributed by that company as trust assets for a retirement benefit trust (In the shareholder register, the shares are listed in the name of Mizuho Trust & Banking Co., Ltd., NIPPON EXPRESS Retirement Benefit Trust.).

The Sampo Group consists of 94 subsidiaries and 18 affiliates. The Group is engaged in domestic P&C insurance, overseas insurance, domestic life insurance, and nursing care & healthcare businesses. Major Group companies are as follows.

List of Group Companies

Domestic P&C Insurance

- ◎ Sampo Japan Nipponkoa Insurance Inc.*¹
- ◎ SAISON AUTOMOBILE AND FIRE INSURANCE COMPANY, LIMITED*²
- ◎ Sampo Japan Nipponkoa Insurance Services Inc.*³
- ◎ Mysurance Inc.
- ★ Hitachi Capital Insurance Corporation

Overseas Insurance

- ◎ Sampo International Holdings Ltd. <Bermuda, British Overseas Territory>
- ◎ Endurance Specialty Insurance Ltd. <Bermuda, British Overseas Territory>
- ◎ Endurance Assurance Corporation <U.S.A.>
- ◎ Endurance Worldwide Insurance Limited <U.K.>
- ◎ SI Insurance (Europe), SA <Luxembourg>
- ◎ Sampo Sigorta Anonim Sirketi <Turkey>
- ◎ Sampo Holdings (Asia) Pte. Ltd. <Singapore>
- ◎ Sampo Insurance Singapore Pte. Ltd. <Singapore>
- ◎ Berjaya Sampo Insurance Berhad <Malaysia>
- ◎ PT Sampo Insurance Indonesia <Indonesia>
- ◎ Sampo Insurance China Co., Ltd. <China>
- ◎ Sampo Insurance (Hong Kong) Company Limited <China>
- ◎ Sampo Seguros S.A. <Brazil>
- ★ Universal Sampo General Insurance Company Limited <India>
- ★ AYA SOMPO Insurance Company Limited <Myanmar>

Domestic Life Insurance

- ◎ Sampo Himawari Life Insurance, Inc.*⁴

Nursing Care & Healthcare

- ◎ Sampo Care Inc.
- ◎ Sampo Health Support Inc.

Financial and Other Services

- ◎ Sampo Japan Nipponkoa Asset Management Co., Ltd.*⁵ (Asset management)
- ◎ Sampo Japan Nipponkoa DC Securities Inc.*⁶ (Defined contribution pension plans)
- ◎ Sampo Risk Management Inc. (Risk management)
- ★ Palantir Technologies Japan K.K. (Software sales)
- ★ DeNA SOMPO Mobility Co., Ltd. (Consumer-to-consumer car sharing)
- ★ akippa Inc. (Parking space sharing)
- ★ DeNA SOMPO Carlife Co., Ltd. (Private car leasing)

Note: The definitions of each sign are as follows. ◎: Consolidated subsidiary ★: Affiliate accounted for under the equity method

*¹ Sampo Japan Nipponkoa Insurance Inc. changed its company name to Sampo Japan Insurance Inc. on April 1, 2020.

*² SAISON AUTOMOBILE AND FIRE INSURANCE COMPANY, LIMITED, and Sampo 24 Insurance Company Limited merged on July 1, 2019, with SAISON AUTOMOBILE AND FIRE INSURANCE COMPANY, LIMITED, as the surviving company.

*³ Sampo Japan Nipponkoa Insurance Services Inc. changed its company name to Sampo Japan Partners Inc. on April 1, 2020.

*⁴ Sampo Japan Nipponkoa Himawari Life Insurance, Inc., changed its company name to Sampo Himawari Life Insurance Inc., on October 1, 2019.

*⁵ Sampo Japan Nipponkoa Asset Management Co., Ltd. changed its company name to Sampo Asset Management Co., Ltd. on April 1, 2020.

*⁶ Sampo Japan Nipponkoa DC Securities Inc. changed its company name to Sampo Japan DC Securities Inc. on April 1, 2020.

Subsidiaries and Affiliates

Consolidated Subsidiaries

Company Name	Location of Head Office	Date of Establishment	Capital	Main Business	Proportion of Voting Rights Held by the Holding Company (%) ^{*1}	Proportion of Voting Rights Held by Subsidiaries or Affiliates of the Holding Company (%) ^{*1}
Sompo Japan Nipponkoa Insurance Inc.* ²	Shinjuku-ku, Tokyo	February 12, 1944	70,000 million Japanese yen	Domestic P&C Insurance	100.0	—
SAISON AUTOMOBILE AND FIRE INSURANCE COMPANY, LIMITED* ³	Toshima-ku, Tokyo	September 22, 1982	32,260 million Japanese yen	Domestic P&C Insurance	—	99.9
Sompo Japan Nipponkoa Insurance Services Inc.* ⁴	Shinjuku-ku, Tokyo	February 28, 1989	100 million Japanese yen	Domestic P&C Insurance	—	100.0
Mysurance Inc.	Shinjuku-ku, Tokyo	July 17, 2018	1,250 million Japanese yen	Domestic P&C Insurance	—	100.0
Sompo International Holdings Ltd.	Pembroke (Bermuda, British Overseas Territory)	March 24, 2017	0 thousand U.S. dollars	Overseas Insurance	—	100.0
Endurance Specialty Insurance Ltd.	Pembroke (Bermuda, British Overseas Territory)	November 30, 2001	12,000 thousand U.S. dollars	Overseas Insurance	—	100.0
Endurance Assurance Corporation	New York, Purchase (U.S.A.)	September 5, 2002	5,000 thousand U.S. dollars	Overseas Insurance	—	100.0
Endurance Worldwide Insurance Limited	London (U.K.)	April 10, 2002	215,967 thousand British pounds	Overseas Insurance	—	100.0
SI Insurance (Europe), SA	Luxembourg (Luxembourg)	January 12, 2018	30 thousand euros	Overseas Insurance	—	100.0
Sompo Sigorta Anonim Sirketi	Istanbul (Turkey)	March 30, 2001	195,498 thousand Turkish liras	Overseas Insurance	—	100.0
Sompo Holdings (Asia) Pte. Ltd.	Singapore (Singapore)	August 1, 2008	790,761 thousand Singaporean dollars	Overseas Insurance	—	100.0
Sompo Insurance Singapore Pte. Ltd.	Singapore (Singapore)	December 14, 1989	278,327 thousand Singaporean dollars	Overseas Insurance	—	100.0
Berjaya Sompo Insurance Berhad	Kuala Lumpur (Malaysia)	September 22, 1980	118,000 thousand Malaysian ringgits	Overseas Insurance	—	70.0
PT Sompo Insurance Indonesia	Jakarta (Indonesia)	December 16, 1975	494,940,000 thousand Indonesian rupiahs	Overseas Insurance	—	80.0
Sompo Insurance China Co., Ltd.	Dalian (China)	May 31, 2005	600,000 thousand Chinese yuan	Overseas Insurance	—	100.0
Sompo Insurance (Hong Kong) Company Limited	Hong Kong (China)	March 25, 1977	270,000 thousand Hong Kong dollars	Overseas Insurance	—	97.8
Sompo Seguros S.A.	Sao Paulo (Brazil)	October 8, 1943	1,010,832 thousand Brazilian reals	Overseas Insurance	—	99.9
Sompo Himawari Life Insurance Inc.* ⁵	Shinjuku-ku, Tokyo	July 7, 1981	17,250 million Japanese yen	Domestic Life Insurance	100.0	—

Company Name	Location of Head Office	Date of Establishment	Capital	Main Business	Proportion of Voting Rights Held by the Holding Company (%) ^{*1}	Proportion of Voting Rights Held by Subsidiaries or Affiliates of the Holding Company (%) ^{*1}
Sompo Care Inc.	Shinagawa-ku, Tokyo	May 26, 1997	3,925 million Japanese yen	Nursing Care & Healthcare	100.0	—
Sompo Health Support Inc.	Chiyoda-ku, Tokyo	October 1, 2018	10 million Japanese yen	Nursing Care & Healthcare	100.0	—
Sompo Japan Nipponkoa Asset Management Co., Ltd. ^{*6}	Chuo-ku, Tokyo	February 25, 1986	1,550 million Japanese yen	Other (Asset management service)	100.0	—
Sompo Japan Nipponkoa DC Securities Inc. ^{*7}	Shinjuku-ku, Tokyo	May 10, 1999	3,000 million Japanese yen	Other (Defined contribution pension plans)	—	100.0
Sompo Risk Management Inc.	Shinjuku-ku, Tokyo	November 19, 1997	30 million Japanese yen	Other (Risk management)	100.0	—
43 other companies						

Equity-Method Affiliates

Company Name	Location of Head Office	Date of Establishment	Capital	Main Business	Proportion of Voting Rights Held by the Holding Company (%) ^{*1}	Proportion of Voting Rights Held by Subsidiaries or Affiliates of the Holding Company (%) ^{*1}
Hitachi Capital Insurance Corporation	Chiyoda-ku, Tokyo	June 21, 1994	6,200 million Japanese yen	Domestic P&C Insurance	—	20.6
Universal Sompo General Insurance Company Limited	Mumbai (India)	January 5, 2007	3,681,818 thousand Indian rupees	Overseas Insurance	—	34.6
AYA SOMPO Insurance Company Limited	Yangon (Myanmar)	July 12, 2018	63,636,241 thousand kyats	Overseas Insurance	—	15.0
Palantir Technologies Japan K.K.	Minato-ku, Tokyo	October 15, 2019	5,432 million Japanese yen	Other (Software sales)	50.0	—
DeNA SOMPO Mobility Co., Ltd.	Shibuya-ku, Tokyo	March 1, 2019	100 million Japanese yen	Other (Consumer-to-consumer car sharing)	49.0	—
akippa Inc.	Naniwa-ku, Osaka city, Osaka	February 2, 2009	100 million Japanese yen	Other (Parking space sharing)	33.5	—
DeNA SOMPO Carlife Co., Ltd.	Shibuya-ku, Tokyo	March 25, 2019	100 million Japanese yen	Other (Private car leasing)	39.0	—
5 other companies						

Note: "Subsidiaries and affiliates" includes subsidiaries and affiliates as specified in the Insurance Business Law and the Enforcement Order for the Insurance Business Law.

*1 Figures in proportion of voting rights are rounded to the indicated decimal place.

*2 Sompo Japan Nipponkoa Insurance Inc. changed its company name to Sompo Japan Insurance Inc. on April 1, 2020.

*3 SAISON AUTOMOBILE AND FIRE INSURANCE COMPANY, LIMITED, and Sompo 24 Insurance Company Limited merged on July 1, 2019, with SAISON AUTOMOBILE AND FIRE INSURANCE COMPANY, LIMITED, as the surviving company.

*4 Sompo Japan Nipponkoa Insurance Services Inc. changed its company name to Sompo Japan Partners Inc. on April 1, 2020.

*5 Sompo Japan Nipponkoa Himawari Life Insurance, Inc., changed its company name to Sompo Himawari Life Insurance Inc., on October 1, 2019.

*6 Sompo Japan Nipponkoa Asset Management Co., Ltd. changed its company name to Sompo Asset Management Co., Ltd. on April 1, 2020.

*7 Sompo Japan Nipponkoa DC Securities Inc. changed its company name to Sompo Japan DC Securities Inc. on April 1, 2020.