

Errata

We apologize that Sampo Holdings Annual Report 2022 was corrected as follows.

Financial Section P.128

Financial Highlights - Consolidated Financial Indicators for Sampo Holdings

【Error】

Consolidated Financial Indicators for Sampo Holdings

| | | | | | | | | | | | Millions of yen | Millions of U.S. dollars | | |
|---|-------------|-------------|-------------|-------------|-------------|-------------|-------------|-------------|-------------|--|-----------------|--------------------------|-------------|---------|
| | FY2010 | FY2011 | FY2012 | FY2013 | FY2014 | FY2015 | FY2016 | FY2017 | FY2018 | | FY2019 | FY2020 | FY2021 | FY2021 |
| Key Figures | | | | | | | | | | | | | | |
| Ordinary Income | 2,621,689 | 2,790,555 | 2,843,226 | 3,008,339 | 3,282,343 | 3,256,186 | 3,419,530 | 3,770,052 | 3,643,040 | | 3,760,366 | 3,846,323 | 4,167,496 | 34,050 |
| Net Premiums Written (P&C Insurance) | 1,933,283 | 1,973,777 | 2,062,606 | 2,268,967 | 2,508,031 | 2,552,193 | 2,550,336 | 2,854,755 | 2,718,155 | | 2,825,482 | 2,923,547 | 3,215,713 | 26,274 |
| Life Insurance Premiums | 238,178 | 250,193 | 264,732 | 277,230 | 277,208 | 297,696 | 323,860 | 346,998 | 349,606 | | 356,064 | 346,177 | 325,183 | 2,656 |
| Ordinary Profit | (6,437) | (51,815) | 104,783 | 112,391 | 208,309 | 216,853 | 241,713 | 141,890 | 198,959 | | 192,451 | 215,097 | 315,512 | 2,577 |
| Net Income Attributable to Shareholders of the Parent | (12,918) | (92,262) | 43,618 | 44,169 | 54,276 | 159,581 | 166,402 | 139,817 | 146,626 | | 122,515 | 142,482 | 224,842 | 1,837 |
| Comprehensive Income | (143,120) | (48,098) | 319,047 | 149,965 | 469,485 | (116,689) | 226,949 | 177,754 | (54,460) | | (77,806) | 512,417 | 143,823 | 1,175 |
| Per Share Information (Yen, U.S. dollars) | | | | | | | | | | | | | | |
| Net Income | (31.11) | (222.30) | 105.10 | 106.98 | 132.85 | 394.21 | 419.15 | 361.39 | 392.26 | | 334.12 | 397.40 | 644.24 | 5.26 |
| Dividends | 80.0 | 80.0 | 60.0 | 60.0 | 70.0 | 80.0 | 90.0 | 110.0 | 130.0 | | 150.0 | 170.00 | 210.00 | 1.71 |
| (Of which, Interim) | — | — | — | 30.0 | 30.0 | 40.0 | 40.0 | 55.0 | 65.0 | | 75.0 | 80.00 | 105.00 | 0.85 |
| Diluted Net Income | — | — | 104.87 | 106.77 | 132.61 | 393.66 | 418.71 | 361.09 | 391.96 | | 333.89 | 397.16 | 643.86 | 5.26 |
| Financial Condition | | | | | | | | | | | | | | |
| Total Net Assets | 1,079,446 | 1,000,577 | 1,283,488 | 1,390,153 | 1,829,852 | 1,652,839 | 1,868,940 | 1,916,210 | 1,779,911 | | 1,612,584 | 2,031,168 | 2,040,789 | 16,674 |
| Total Assets | 8,981,974 | 8,893,378 | 9,178,198 | 9,499,799 | 10,253,431 | 10,186,746 | 11,931,135 | 11,948,323 | 12,018,254 | | 11,977,836 | 13,118,656 | 13,787,835 | 112,654 |
| Equity Ratio (%) | 12.0 | 11.2 | 13.9 | 14.5 | 17.8 | 16.1 | 15.1 | 15.8 | 14.6 | | 13.3 | 15.4 | 14.7 | — |
| Consolidated Solvency Margin Ratio (%) | — | 549.8 | 688.3 | 783.1 | 803.4 | 851.4 | 748.9 | 862.5 | 859.8 | | 856.1 | 871.8 | 773.0 | — |
| Stock Information (Shares) | | | | | | | | | | | | | | |
| Number of Shares Outstanding (Excluding Treasury Stock) | 415,106,429 | 414,825,205 | 414,726,157 | 411,284,208 | 408,037,848 | 404,162,514 | 393,398,576 | 380,579,944 | 372,426,159 | | 364,125,082 | 354,956,543 | 342,602,649 | — |
| Adjusted Financial Indicators | | | | | | | | | | | | | | |
| Adjusted Consolidated Profit (Billions of yen) | 27.6 | (96.8) | 20.7 | 35.5 | 113.6 | 164.3 | 183.2 | 162.7 | 113.5 | | 150.8 | 202.1 | 2,613 | 213.5 |
| Adjusted Consolidated ROE (%) | 1.6 | (10.9) | 1.2 | 1.9 | 5.1 | 6.9 | 7.6 | 6.4 | 4.5 | | 6.4 | 8.0 | 9.4 | — |

【Correct】

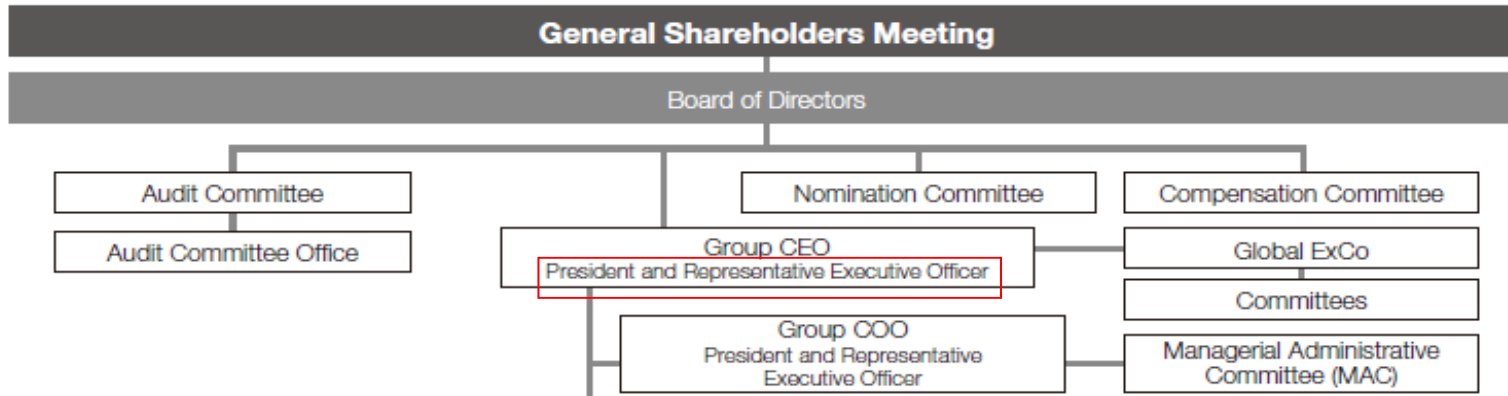
Consolidated Financial Indicators for Sampo Holdings

| | | | | | | | | | | | Millions of yen | Millions of U.S. dollars | | |
|---|-------------|-------------|-------------|-------------|-------------|-------------|-------------|-------------|-------------|--|-----------------|--------------------------|-------------|---------|
| | FY2010 | FY2011 | FY2012 | FY2013 | FY2014 | FY2015 | FY2016 | FY2017 | FY2018 | | FY2019 | FY2020 | FY2021 | FY2021 |
| Key Figures | | | | | | | | | | | | | | |
| Ordinary Income | 2,621,689 | 2,790,555 | 2,843,226 | 3,008,339 | 3,282,343 | 3,256,186 | 3,419,530 | 3,770,052 | 3,643,040 | | 3,760,366 | 3,846,323 | 4,167,496 | 34,050 |
| Net Premiums Written (P&C Insurance) | 1,933,283 | 1,973,777 | 2,062,606 | 2,268,967 | 2,508,031 | 2,552,193 | 2,550,336 | 2,854,755 | 2,718,155 | | 2,825,482 | 2,923,547 | 3,215,713 | 26,274 |
| Life Insurance Premiums | 238,178 | 250,193 | 264,732 | 277,230 | 277,208 | 297,696 | 323,860 | 346,998 | 349,606 | | 356,064 | 346,177 | 325,183 | 2,656 |
| Ordinary Profit | (6,437) | (51,815) | 104,783 | 112,391 | 208,309 | 216,853 | 241,713 | 141,890 | 198,959 | | 192,451 | 215,097 | 315,512 | 2,577 |
| Net Income Attributable to Shareholders of the Parent | (12,918) | (92,262) | 43,618 | 44,169 | 54,276 | 159,581 | 166,402 | 139,817 | 146,626 | | 122,515 | 142,482 | 224,842 | 1,837 |
| Comprehensive Income | (143,120) | (48,098) | 319,047 | 149,965 | 469,485 | (116,689) | 226,949 | 177,754 | (54,460) | | (77,806) | 512,417 | 143,823 | 1,175 |
| Per Share Information (Yen, U.S. dollars) | | | | | | | | | | | | | | |
| Net Income | (31.11) | (222.30) | 105.10 | 106.98 | 132.85 | 394.21 | 419.15 | 361.39 | 392.26 | | 334.12 | 397.40 | 644.24 | 5.26 |
| Dividends | 80.0 | 80.0 | 60.0 | 60.0 | 70.0 | 80.0 | 90.0 | 110.0 | 130.0 | | 150.0 | 170.00 | 210.00 | 1.71 |
| (Of which, Interim) | — | — | — | 30.0 | 30.0 | 40.0 | 40.0 | 55.0 | 65.0 | | 75.0 | 80.00 | 105.00 | 0.85 |
| Diluted Net Income | — | — | 104.87 | 106.77 | 132.61 | 393.66 | 418.71 | 361.09 | 391.96 | | 333.89 | 397.16 | 643.86 | 5.26 |
| Financial Condition | | | | | | | | | | | | | | |
| Total Net Assets | 1,079,446 | 1,000,577 | 1,283,488 | 1,390,153 | 1,829,852 | 1,652,839 | 1,868,940 | 1,916,210 | 1,779,911 | | 1,612,584 | 2,031,168 | 2,040,789 | 16,674 |
| Total Assets | 8,981,974 | 8,893,378 | 9,178,198 | 9,499,799 | 10,253,431 | 10,186,746 | 11,931,135 | 11,948,323 | 12,018,254 | | 11,977,836 | 13,118,656 | 13,787,835 | 112,654 |
| Equity Ratio (%) | 12.0 | 11.2 | 13.9 | 14.5 | 17.8 | 16.1 | 15.1 | 15.8 | 14.6 | | 13.3 | 15.4 | 14.7 | — |
| Consolidated Solvency Margin Ratio (%) | — | 549.8 | 688.3 | 783.1 | 803.4 | 851.4 | 748.9 | 862.5 | 859.8 | | 856.1 | 871.8 | 773.0 | — |
| Stock Information (Shares) | | | | | | | | | | | | | | |
| Number of Shares Outstanding (Excluding Treasury Stock) | 415,106,429 | 414,825,205 | 414,726,157 | 411,284,208 | 408,037,848 | 404,162,514 | 393,398,576 | 380,579,944 | 372,426,159 | | 364,125,082 | 354,956,543 | 342,602,649 | — |
| Adjusted Financial Indicators | | | | | | | | | | | | | | |
| Adjusted Consolidated Profit (Billions of yen) | 27.6 | (96.8) | 20.7 | 35.5 | 113.6 | 164.3 | 183.2 | 162.7 | 113.5 | | 150.8 | 202.1 | 261.3 | 2,135 |
| Adjusted Consolidated ROE (%) | 1.6 | (10.9) | 1.2 | 1.9 | 5.1 | 6.9 | 7.6 | 6.4 | 4.5 | | 6.4 | 8.0 | 9.4 | — |

【Error】

Organization Chart

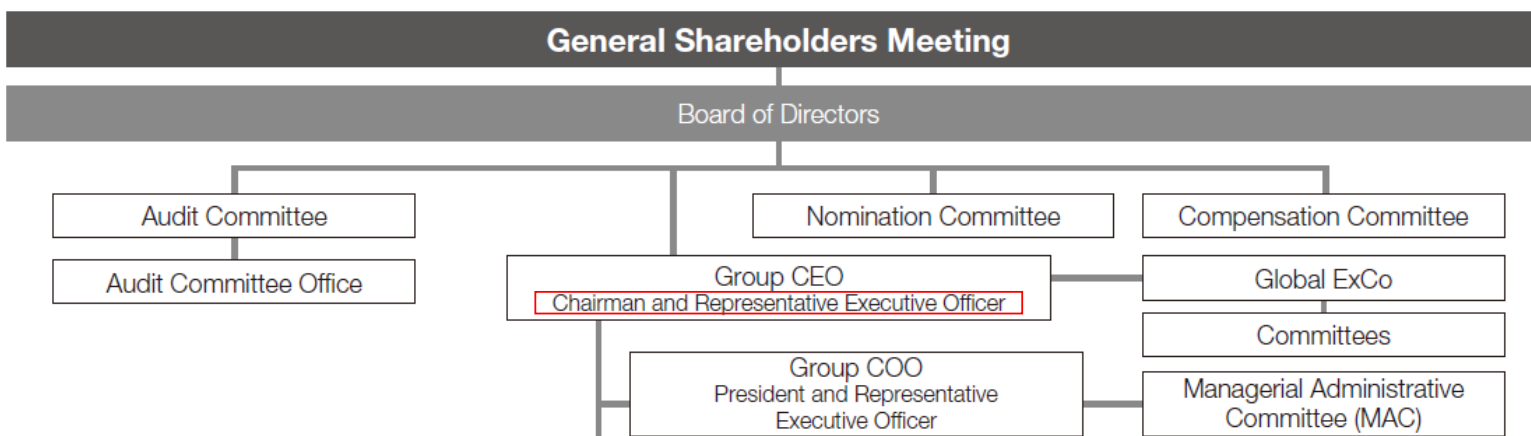
(As of August 1, 2022)



【Correct】

Organization Chart

(As of August 1, 2022)



Corporate Data Section P. 226

The Company, Subsidiaries, and Affiliates - Consolidated Subsidiaries

【Error】

| Company Name | Location of Head Office | Date of Establishment | Capital | Main Business | Proportion of Voting Rights Held by the Holding Company (%) ¹⁾ | Proportion of Voting Rights Held by Subsidiaries or Affiliates of the Holding Company (%) ¹⁾ |
|----------------------------------|-------------------------|-----------------------|-----------------------------|--|---|---|
| Sompo Care Inc. | Shinagawa-ku, Tokyo | May 26, 1997 | 3,925 million Japanese yen | Nursing Care & Healthcare | 100.0 | — |
| Sompo Warranty Inc. | Chiyoda-ku, Tokyo | August 20, 2009 | 95 million Japanese yen | Others (Extended warranty) | 100.0 | — |
| SOMPO Light Vortex, Inc. | Shinjuku-ku, Tokyo | July 1, 2021 | 12,198 million Japanese yen | Other (Digital-related) | 100.0 | — |
| Sompo Asset Management Co., Ltd. | Chuo-ku, Tokyo | February 25, 1986 | 1,550 million Japanese yen | Other (Asset management service) | 100.0 | — |
| Sompo Japan DC Securities Inc. | Shinjuku-ku, Tokyo | May 10, 1999 | 3,000 million Japanese yen | Other (Defined contribution pension plans) | — | 100.0 |
| Sompo Risk Management Inc. | Shinjuku-ku, Tokyo | November 19, 1997 | 30 million Japanese yen | Other (Risk management) | 100.0 | — |
| Sompo Health Support Inc. | Chiyoda-ku, Tokyo | October 1, 2018 | 10 million Japanese yen | Nursing Care & Healthcare | 100.0 | — |
| 47 other companies | | | | | | |

【Correct】

| Company Name | Location of Head Office | Date of Establishment | Capital | Main Business | Proportion of Voting Rights Held by the Holding Company (%) ¹⁾ | Proportion of Voting Rights Held by Subsidiaries or Affiliates of the Holding Company (%) ¹⁾ |
|----------------------------------|-------------------------|-----------------------|-----------------------------|--|---|---|
| Sompo Care Inc. | Shinagawa-ku, Tokyo | May 26, 1997 | 3,925 million Japanese yen | Nursing Care & Seniors | 100.0 | — |
| Sompo Warranty Inc. | Chiyoda-ku, Tokyo | August 20, 2009 | 95 million Japanese yen | Others (Extended warranty) | 100.0 | — |
| SOMPO Light Vortex, Inc. | Shinjuku-ku, Tokyo | July 1, 2021 | 12,198 million Japanese yen | Other (Digital-related) | 100.0 | — |
| Sompo Asset Management Co., Ltd. | Chuo-ku, Tokyo | February 25, 1986 | 1,550 million Japanese yen | Other (Asset management service) | 100.0 | — |
| Sompo Japan DC Securities Inc. | Shinjuku-ku, Tokyo | May 10, 1999 | 3,000 million Japanese yen | Other (Defined contribution pension plans) | — | 100.0 |
| Sompo Risk Management Inc. | Shinjuku-ku, Tokyo | November 19, 1997 | 30 million Japanese yen | Other (Risk management) | 100.0 | — |
| Sompo Health Support Inc. | Chiyoda-ku, Tokyo | October 1, 2018 | 10 million Japanese yen | Other (Healthcare) | 100.0 | — |
| 47 other companies | | | | | | |